



M DINING TABLE

The genesis of the design came through observing El Castillo, in Mexico. Architectural elements from its pyramidal form have been fused into the table's design. The slender metallic mid-section lifts the floating top to express the duality of earth and sky.

Each part - the base, support and top - are distinct in form and material, a practice reminiscent of the simplified and streamlined works of sculptor Constantin Brâncuși.

NOTES

The M - Table is available in two sizes; 1200mm (4-seats) in marble and oak and 1500mm (6-seats) in oak only.

Our table tops are crafted from fine Italian marbles imported by premium local suppliers, complemented by a selection of timbers that have been wire brushed to a satin finish.

All our solid timber and veneers are eco-certified and FSC® rated.

ELEMENTS

Marble or timber top, metal support and timber base.

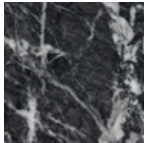


MATERIALS

Top Marble (available in 1200mm)



Carrara

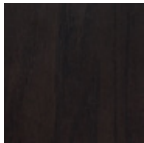


Grigio Carnico

Top Timber (American Oak, available in 1200mm and 1500mm)



Natural

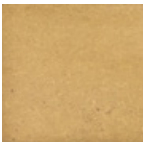


Smoked

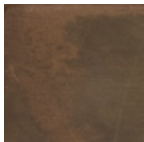


Limed

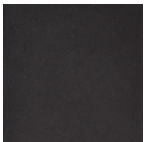
Support Options



Brass

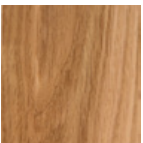


Antiqued Brass

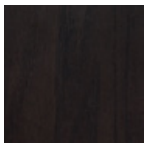


Black Nickel

Base Timber (American Oak)



Natural



Smoked



Limed

DIMENSIONS

Width 1200mm diameter
 (marble or timber)
 1500mm diameter
 (timber only)

Height 730mm (marble top);
 740mm (timber top)

