

## M - LOW COFFEE TABLE



30% off

### PRODUCT DESCRIPTION

---

Like its dining table counterpart the M-Low Cofee Table was inspired by the El Castillo, in Mexico. Architectural elements from its pyramidal form have been fused into the table's design. The slender metallic mid-section lifts the floating top to express the duality of earth and sky.

Each part; the base, support and top are distinct in form and material, a practice reminiscent of the simplified and streamlined works of sculptor Constantin Brâncuși. The 800mm diameter coffee table is the perfect accompaniment to your interior space.

### NOTES

---

Our table tops are crafted from fine Italian marbles or beautiful American Oak imported by premium local suppliers.

This table's selection of timbers are wire brushed to a natural satin finish.

All our solid timbers and veneers are eco-certified and FSC® rated

### ELEMENTS

---

Marble or timber top, metal support and timber base.

# M - LOW COFFEE TABLE

~~\$3,650~~ \$2,555<sub>(exc gst)</sub>

## MATERIALS

---

### Top - Marble



Statuario



Carrara



Grigio Carnico

### Top - American Oak



Natural



Smoked



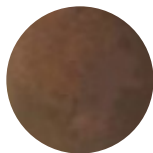
Limed

### Metal Support

---



Brass



Aged Brass



Black

### Base - American Oak

---



Natural



Smoked



Limed

## DIMENSIONS

---

Width: Diameter, 800mm

Height: 350mm

Depth: Base, 400mm

