



C KELLY CHAIR

The Kelly Chair is an indoor sun lounger that enables maximum airflow and comfort for a tropical environment. Proportioned to enable two sitting styles, ideal for slouching.

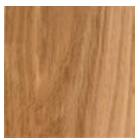
MATERIALS

American Oak, Rattan, Stainless steel. Stain finish options, American Walnut and Teak frame options. Brass plating options. Oil or polyurethane finish



MATERIALS

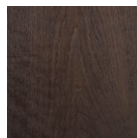
Timber:



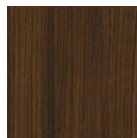
Oak



Limed



Smoked



Walnut

Seat:



Rattan

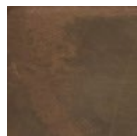
Legs:



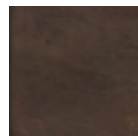
Stainless Steel



Brass



Antiqued Brass



Bronze

DIMENSIONS

Width 1130mm

Depth 728mm

Height 818mm

